

THE NORTH OLYMPIC SHUTTLE & SPINDLE GUILD
HAS BEEN WELCOMING NEW MEMBERS FOR OVER 40 YEARS!



A Creative Community of Fiber Artists

MEMBER HANDBOOK



North Olympic Shuttle and Spindle Guild is a 501(c)(3) nonprofit corporation

We Are So Pleased To Welcome You!

We are a long established group of fiber crafters and artists who recently formalized that relationship by becoming a 501 (c)(3). We enjoy sharing our knowledge and skills with other members and the public through our meetings, targeted outreach, and public events. Learning new skills is also important and we achieve this through monthly programs, workshops, the guild library, study groups, and mentoring.

TABLE OF CONTENTS

Monthly Meet Up Location.....	p. 3
Fiscal Guild Calendar	p. 3
Volunteering	p. 4
Website	p. 5
Guild Library	p. 6
Study Groups	p. 7
Community Meet-Ups	p. 8
Other Guilds & Fiber Organizations.....	p. 9
Scholarships	p. 10
Outreach.....	p. 10

NOSSG MONTHLY MEETINGS

We meet the first Saturday of the month at 10:00am

Our Meeting Schedule

Short Member Meeting • Show & Tell • Social Time • Guild Program

Our monthly meetings are held at the
Olympic Unitarian Universalist Fellowship
 1033 N Barr Rd, Port Angeles, WA 98362



Past Programs

Spinning the Perfect Skein
 Contemporary Tapestry
 Weaving on a Weighted Loom
 Basket Weaving
 Fiber Walk-About
 ANWG Dye Day
 Chain Plying with Beads.
 The Love of Charts.
 Knitting Using Hand Spun Yarn

“The programs NOSSG
 have at their meetings are
 both educational and fun!”

— Leslie Hoex
 Committee Chair

FISCAL GUILD CALENDAR

This is a list of month we have meetings and months when we have other Guild events.

SEPTEMBER

Regular Meeting

Beginning of our fiscal year
 If it's Labor Day weekend then
 it's moved to the 2nd Saturday

OCTOBER

No Meeting

Fiber Month
 Fiber Arts Festival
 PNW Fiber Arts Expo

NOVEMBER

Regular Meeting

DECEMBER

No Meeting

Holiday Party (Sat or Sun)
 usually 2nd weekend of the month

JANUARY

Regular Meeting

If it's New Years Day then
 it's moved to the 2nd Saturday

FEBRUARY

Regular Meeting

MARCH

Regular Meeting

APRIL

Regular Meeting

MAY

Regular Meeting
 Shepard's Festival
 Memorial Day Monday

MASK MANDATE

Masks are not mandatory but recommended for those at high risk. People with symptoms, a positive test, or exposure to someone with COVID-19 should stay home.

JUNE

No Meeting

Guild Picnic - date varies
 Conferences
 ANWG, Convergence

JULY

No Meeting

AUGUST

Regular Meeting

County Fair
 3rd weekend of the month

GUILD VOLUNTEERING

Our Guild is supported on a volunteer basis and we count on our members to lend a volunteer hand with our meetings, on a committee or at one of our events. We would love to count on your support.

GUILD SUPPORT

- Board Positions
President, Vice President, Asst. Vice President,
Past President, Treasurer, Asst. Treasurer,
Secretary, Asst. Secretary
- HGA /ANWG Representative
- Historian
- Hospitality
- Library Managers
- Meeting Clean Up
- Meeting Set Up
- Membership
- Nominating Committee
Needed March through May
- Outreach/Community Service
- Programs
Assisting the Vice President

- Publicity
- Scholarships
- Social Media / Website
- Treasurer Audit
Needed in September
- Workshops

EVENT SUPPORT

- County Fair
- Farmer's Market
- Guild Picnic
- Guild Stash Sale
- Holiday Party
- PNW Fiber Arts Expo
- Shepherds' Festival

“Volunteering enriches
yours and others lives with
learning and networking.”

— Rocky Wisniewski
Spinner




Scan this code to fill out
our volunteer form



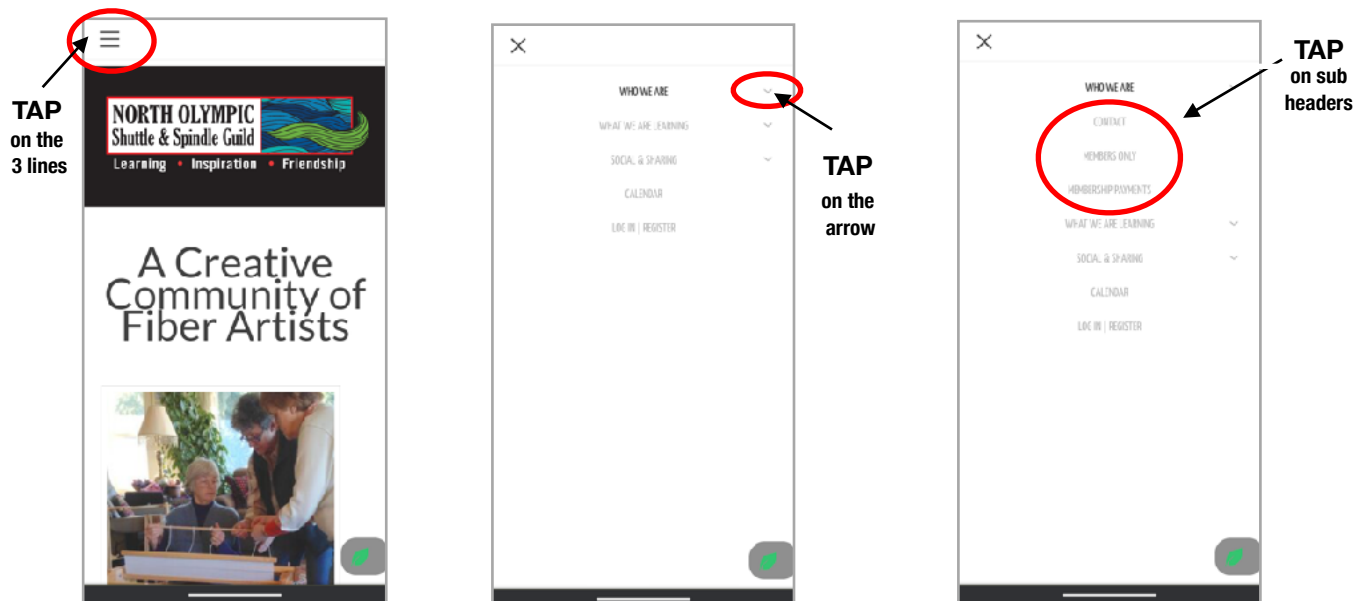
WEBSITE

The chart below shows what you will find under each header in the menu bar.
Hover over the header and the drop downs will open

MAIN MENU HEADER ON THE WEBSITE

WHO WE ARE	WHAT WE ARE LEARNING	SOCIAL & SHARING	CALENDAR	LOG IN / REGISTER
Information about us Where our meetings are Become a member	Links to Study Groups Links to Workshops Links to programs	Photo release Show & Tell Photos	Calendar of Events	Log in or register for the "Member's Only" page
CONTACT Send us an email Small calendar Guild Officers Committee Chairs	STUDY GROUPS Study Group Information Study Group survey	MEMBER SPOTLIGHT What members are doing		
MEMBERS ONLY Guild By Laws Member Roster Hostesses Agenda Guild Library Spending Reports Guild Minutes SOPs Scholarship Application	PROGRAMS Recent program photos Upcoming programs	OTHER GUILDS Local Guilds National Guilds		
MEMBERSHIP PAYMENTS Membership survey	WORKSHOPS Recent program photos Upcoming programs	EVENTS & CLASSES Online & In Person Classes Olympic Peninsula Events WA & OR State Events		
		ONLINE SHOPPING Member's Businesses		
		CLASSIFIEDS Items for sale		

MAIN MENU HEADER ON A PHONE



GUILD LIBRARY

Our Guild library is available to all our members and is located at Cabled Fiber & Yarn in Port Angeles. You can also reserve books on our website under the "Members Only" page.

"The NOSSG Library has a wealth of information available in books, magazines, DVDs, and VHS on weaving, spinning, dyeing, clothing design."

— Beth Witters
Committee Chair



Scan this code to go to the online library.

Guild Librarian Beth Witters

beth@cabledfiberstudio.com or 360.504.2233
if you have a question, suggestion or a request

Assistant Librarian Lee Johnson: tjgj@aol.com

Library Location

Cabled Fiber & Yarn
125 W 1st Street, Port Angeles, Washington 98362

Library Hours:

Tue - Fri: 11am-6pm • Sat: 10am-5pm
Closed Sun & Mon

LibraryThing
Home
Groups
Talk
Zeitgeist

nossguild
Profile
Books
Charts & Graphs
Reviews
Gallery

Your library ▼
List
Covers
Tags ▼
Style
A
B
C
D
E
Settings

1 – 50 of 303

GUILD STUDY GROUPS



Warped Ones

2nd Monday of the month • 1pm • Rotating Location

Contact: Lynn Baritelle at lynnbaritelle@yahoo.com

Warped Ones is a long running group of multi-shaft weavers within NOSSG. Each year we choose to do an in depth study of a particular area in weaving.

Weavers Anonymous

3rd Monday of the month • 10am • 8th Street Emporium

Contact: Leslie Hoex at lesliehoex@gmail.com

Weavers Anonymous is a beginner weaving group for people with multi-shaft looms. This is a structured group with mentors helping the group.

Tapestry Together

3rd Monday of the month • 11am • KSQM radio station in Sequim

Contact: Kelly Patterson-Merkley at kellybrent@sbcglobal.net

This study group is for those who are interested in tapestry weaving. We meet up to share ideas, questions, problems, resources and insights. Open to all, including beginners!


Dye Study Group

2nd Sunday of the month • 2pm • ZOOM (unless meeting in person)

Contact Debra Danielson at: debradnlsn@msn.com

The Dye Study group meets every other month starting in January. They are interested in the study of all aspects of dyeing fiber using natural, reactive and acid dyes.

COMMUNITY MEET-UPS



“A great place to get together
and encourage each other with
new patterns and colors or to
troubleshoot situations”

— Cathy Balliu
Knitter

Inkle Weaving

Tuesdays 1:30 - 3:00pm

8th Street Emporium
238 W 8th St, Port Angeles, WA 98362

This is a casual group that gathers to weave on inkle looms. Meetings can be changed at a moment's notice.

Contact Karol Gray at lilbit@olypen.com for more information.

Fiber Spinning

Mondays 1:00-4:00pm

Alternating locations:

- 8th street Emporium
238 W 8th St, Port Angeles 98362
- Parish House Dungeness Valley Lutheran Church
925 N Sequim Ave, Sequim 98382

This fiber spinning group meets once a week alternating locations between Port Angeles and Sequim. Meetings can be changed at a moment's notice.

Contact Sara Boore at sboore@yahoo.com for more information.

Knitting

Tuesday & Thursday 11:00am

8th Street Emporium
238 W 8th St, Port Angeles, WA 98362

This meet up is for knitters to get together to chat, show off projects or get questions answered.

All Fiber Arts

Wednesdays 9am-11am

Thursday 5-7pm
Cabled Fiber & Yarn
125 W. 1st Street, Port Angeles WA, 98362

This meet up is for all fiber arts so bring any project you are working on show it off or ask for help.

Contact Beth or MarySue at: info@cabledfiber.com

OTHER GUILDS & FIBER ORGANIZATIONS



Associations of Northwest Weaving Guilds

www.northwestweavers.org

Our guild is a member. Includes guilds in Alberta, BC, Saskatchewan, AK, WA, OR, ID, MT, WY. They have a large Conference on ODD years.



Handweavers Guild of America

www.weavespindye.org

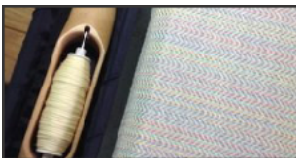
Our guild is a member and their magazine, Shuttle, Spindle and Dyepot, is in our library (see p. 6)



Northwest Spinners and Fiber Arts Association

www.nwsfa.clubexpress.com

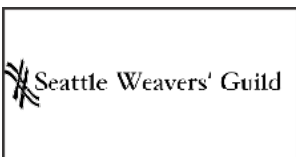
Guild members can become a member of this group as individuals. They meet once a month in Port Angeles.



Peninsula Weavers & Spinners Guild

www.facebook.com/peninsulaweaversguild

For 40 years, the Peninsula Weavers Guild has been a place for weavers and aspiring weavers to connect and share their projects, expertise and inspiration. They meet in Port Townsend.



The Seattle Weavers' Guild

www.seattleweaversguild.com

The Seattle Weavers' Guild is an enthusiastic and active group of weavers that meets to share a love of weaving, inspire each other, and learn new techniques.



Whidbey Weavers Guild

www.whidbeyweaversguild.org

The Guild provides educational opportunities through speakers, workshops, study groups, our lending library, and independent study grants to further members' education in the fiber arts.

ACRONYMS

NOSSG

North Olympic Shuttle
and Spindle Guild

HGA

Handweavers Guild
of America

ANWG

Associations of Northwest
Weaving Guilds

NwSFA

Northwest Spinners and
Fiber Arts Association

SCHOLARSHIPS



The NOSSG Guild has budgeted for 2 regular scholarships of \$200 each for members and 2 Memorial Scholarships of \$150 for members and potential members. These are for those who enroll in a workshop or other venue offered for the purpose of increasing knowledge in Fiber Arts. In return the member gives a presentation program to the rest of the guild members, enlightening them on what they learned.



Scan this code to download
the application form

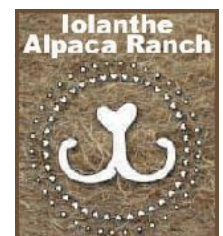
**DEADLINE HAS BEEN CHANGED FROM OCTOBER TO NOVEMBER
DUE TO THE FIBER ARTS FESTIVAL**

OUTREACH

“I had a great time at our college classes on weaving and dyeing. It’s always fun to share a skill with newcomers”

— Lynn Baritelle
Weaver

Outreach activities are coordinated by a committee, but any member can suggest and potentially lead an activity. Currently we demonstrate at the PNW Fiber Arts Expo, Shepard's Festival, Clallam County Fair, and Sequim Summer Saturday Market. We have provided community education at Peninsula College Community Education, for the 4H group, at Boys & Girls Club, and at local schools. We have also worked with the Iolanthe Alpaca Ranch in the past.



[illegible]

NOTES

[illegible]

[illegible]